



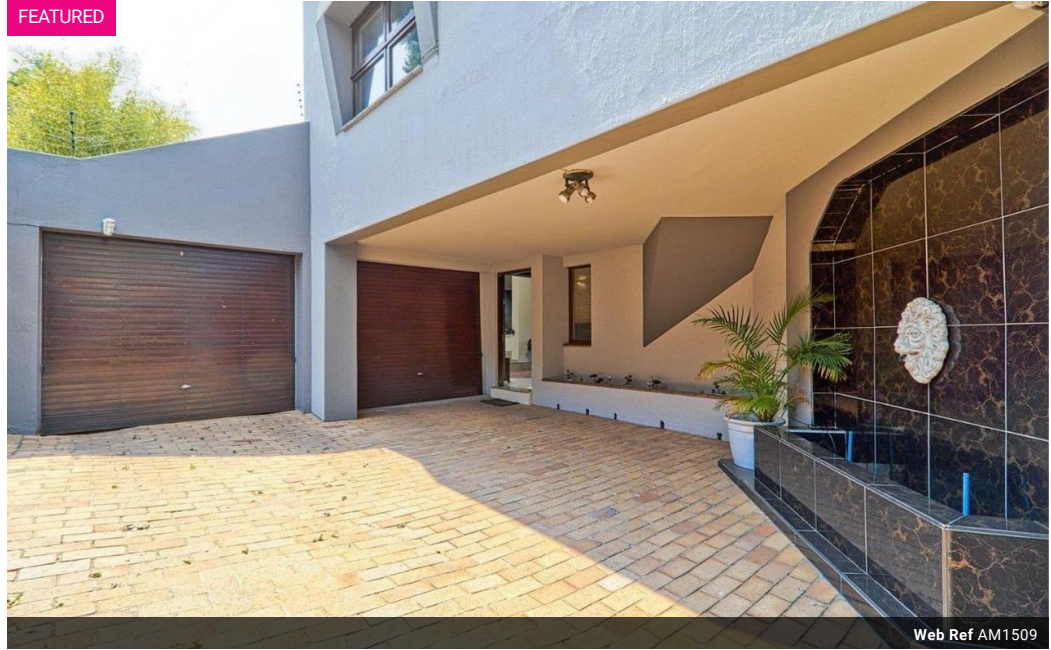
**Melody Mahdeb**  
082 775 8540  
melody@amourproperties.co.za

Contact Amour Properties -  
Linksfield

010 0030049

P.O Box 92154  
Norwood  
2117

FEATURED



Web Ref AM1509



R3,850,000

 4  3  2

**Monthly Bond Repayment** R39,739.25

Calculated over 20 years at 11% with no deposit.

**Transfer Costs** R264,550.00 **Bond Costs** R51,610.00

These calculations are only a guide. Please ask your conveyancer for exact calculations.

**Monthly Rates** R2,000

Magnificent family home offering the perfect blend of comfort and luxury in a Prime Position!

Discover the perfect blend of comfort and luxury in Norwood. A magnificent home for the discerning buyer seeking the finest finishes, ultimate privacy, and top-notch security. This elegant property across the road from the Houghton Golf Course and close to the Old Eds Gym is a perfect choice. Centrally located, the home greets you with a stunning waterfall at the entrance, evoking a tranquil oriental ambiance. This leads to a grand entrance hall and a skylight-lit lobby, flooding the interior with natural light. The living areas radiate from this luminous space, creating an inviting atmosphere of style and sophistication. The home seamlessly blends timeless charm with modern functionality.

The expansive dining and lounge areas open onto a beautifully landscaped garden and private courtyards. A well-appointed kitchen and...

## Features

**Pets Allowed** Yes

### Interior

Bedrooms	4
Bathrooms	3
Kitchens	1
Recep. Rooms	3
Furnished	No

### Exterior

Garages	2
Carports / Parkings	3
Security	Yes
Dom. Accom.	1
Pool	Yes
Views	False

### Sizes

Land Size	569m <sup>2</sup>
-----------	-------------------

### Extras

Alarm System Breakfast Nook Built in Wardrobes Courtyard Covered Patio Dishwasher  
Connection Electric Door Electric Fencing Electric Gate Entrance Hall Extractor Fan Eye Level  
Oven Fireplace Gas Hob Granite Tops Laminated Floors Outdoor Beams Recreation Room  
Scully Special Lights Staff Quarters Domestic Rooms Totally Walled