



Debbie Noach
 0824506546
 debbie@amourproperties.co.za

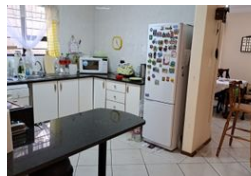
Contact Amour Properties -
 Linksfield

010 0030049

P.O Box 92154
 Norwood
 2117



Web Ref AM1431



R1,290,000

 2
  2
  1

Monthly Bond Repayment R13,096.45

Calculated over 20 years at 10.75% with no deposit.

Transfer Costs R37,317.00

Bond Costs R27,105.00

These calculations are only a guide. Please ask your conveyancer for exact calculations.

Monthly Levy R1,945

Monthly Rates R1,850

Special Levy R1,000

North facing garden unit in sought after complex

This bright & light north facing, ground floor unit is the perfect lock up and go home.

The lounge and dining room lead onto a large patio overlooking a lush garden. Two bedrooms and 2 bathrooms (MES). Kitchen with granite tops.

Excellent security, 24 hour guard, 1 garage and 1 carport, loads of visitors parking. Close to all amenities.

Features

Pets Allowed Yes

Interior

Bedrooms	2
Bathrooms	2
Kitchens	1
Recep. Rooms	2
Furnished	No

Exterior

Garages	1
Carports / Parkings	1
Security	No
Pool	No
Views	False

Sizes

Floor Size	138m ²
------------	-------------------