



Bellah Mathabathe
071 514 5091
bellah@amourproperties.co.za

Contact Amour Properties -
Linksfield

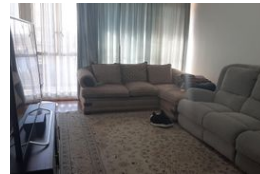
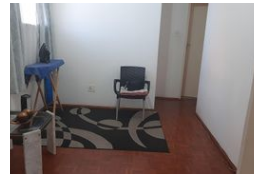
010 0030049

P.O Box 92154
Norwood
2117



SOLE MANDATE

Web Ref AM1169



R435,000

 1  1.5

Monthly Bond Repayment R4,490.02
Calculated over 20 years at 11% with no deposit.

Transfer Costs R17,928.00 **Bond Costs** R12,935.00
These calculations are only a guide. Please ask your conveyancer for exact calculations.

Monthly Levy R3,400

ONE BEDROOM NEAR LOUIS BOTHA

IDEAL FOR AN INVESTOR OR A STUDENT SITUATED NEAR REYA VAYA AS ROUTE AND PUBLIC TRANSPORT

OFFERS ONE BEDROOM WITH A LARGE BALCONY OVERLOOKING THE BALFOUR PARK STADIUM

ENTER INTO A DINING AND LOUNGE ALL WITH GLEAMING PARQUET FLOORS
A KITCHEN ONE BATH WITH A SHOWER OVER THE BATH AND SEPARATE TOILET

ONE CARPORT AND SECURED VISITORS PARKING 24 HOUR GUARD
WALK TO BALFOUR PARK

Features

Interior

Bedrooms	1
Bathrooms	1.5
Kitchens	1
Recep. Rooms	2
Furnished	No

Exterior

Carports / Parkings	1
Security	Yes
Pool	Yes
Views	True

Sizes

Floor Size	78m ²
------------	------------------

Extras

Built-in Wardrobes Covered Parking Shared Pool Electric Gate Guard Guard House